

School Year 2008-2009

# Imlay Elementary School

Adequate Yearly Progress Report for 2008-2009 School Year \*FINAL RESULTS

School ID Number: 14101.1

**School District:** Pershing  
**Grades Served:** Kindergarten - Grade 6  
**Principal:** Shea B. Murphy  
**Address:** 1100 Harvard Way  
Lovelock, NV 89419  
**Phone:** 775-538-7360

**School Designation:** Adequate

**Designation Area Status:**

ELA	Adequate
Math	Adequate
Other Indicator	Adequate

**AYP Classification Information:**

Imlay Elementary School has been classified as a school which demonstrated Adequate Yearly Progress during the 2008-2009 school year. Classification as demonstrating AYP is due to the school's meeting all No Child Left Behind criteria in the areas of English language arts (ELA), mathematics, and the school-wide other indicator.

**AYP Report Information:**

This report contains information regarding the performance of this school during the 2008-2009 school year under the NCLB accountability model. Worksheet tabs, along the bottom of this file, report performance of the school in all AYP criteria. Click on any of the 'Questions?' links in this report to get more information.

**Student Demographics:**

**Eligible Population:** 9 students

Race & Ethnicity Composition	
American Indian / Alaskan Native	0.0%
Asian / Pacific Islander	0.0%
Hispanic / Latino	0.0%
Black / African American	0.0%
White / Caucasian	100.0%

<b>Students with an IEP:</b>	<b>33.3%</b>
<b>Limited English Proficient (LEP) Students:</b>	<b>0.0%</b>
<b>Students Receiving Free or Reduced Price Lunch:</b>	<b>88.9%</b>

**Students Continuously Enrolled:** 100.0%

**Title I Funded School?** No

## Imlay ES 2008-2009 AYP Results

Population	ELA Participation	ELA Achievement		Math Participation	Math Achievement		Other Indicator
		ELA Status	ELA Safe Harbor		Math Status	Math Safe Harbor	
School	Yes	Yes	-	Yes	Yes	-	Yes
American Indian / Alaskan Native	NA	***	***	NA	***	***	
Asian / Pacific Islander	NA	***	***	NA	***	***	
Hispanic / Latino	NA	***	***	NA	***	***	
Black / African American	NA	***	***	NA	***	***	
White / Caucasian	Yes	***	***	Yes	***	***	
IEP	Yes	***	***	Yes	***	***	
LEP	NA	***	***	NA	***	***	
FRL	Yes	***	***	Yes	***	***	

Color Key	
	Did Not Make Adequate Yearly Progress
	WARNING: Status Level Below Baseline
	Sample Size Too Small to Evaluate
	Criteria Met Through Appeal

NA Denotes Sample Size = 0; Participation Rate Analysis Not Applicable

\*\*\* Denotes Sample Size < 25; Status and Safe Harbor Evaluations Not Applicable

\* Denotes Safe Harbor Not Made Due To Other Indicator

- Denotes Data Not Available

UA Denotes 2 or 3 Year Averaging Appeal Applied

**School Year 2008-2009**

Imlay ES	ELA Participation				Math Participation			
	Population	Enrollment	ELA Participation (N >= 20)	ELA Participation (N < 20)	Make ELA Participation?	Enrollment	Math Participation (N >= 20)	Math Participation (N < 20)
School	9.0	-	9.0	Yes	9.0	-	9.0	Yes
American Indian / Alaskan Native	0.0	-	-	NA	0.0	-	-	NA
Asian / Pacific Islander	0.0	-	-	NA	0.0	-	-	NA
Hispanic / Latino	0.0	-	-	NA	0.0	-	-	NA
Black / African American	0.0	-	-	NA	0.0	-	-	NA
White / Caucasian	9.0	-	9.0	Yes	9.0	-	9.0	Yes
IEP	3.0	-	3.0	Yes	3.0	-	3.0	Yes
LEP	0.0	-	-	NA	0.0	-	-	NA
FRL	8.0	-	8.0	Yes	8.0	-	8.0	Yes

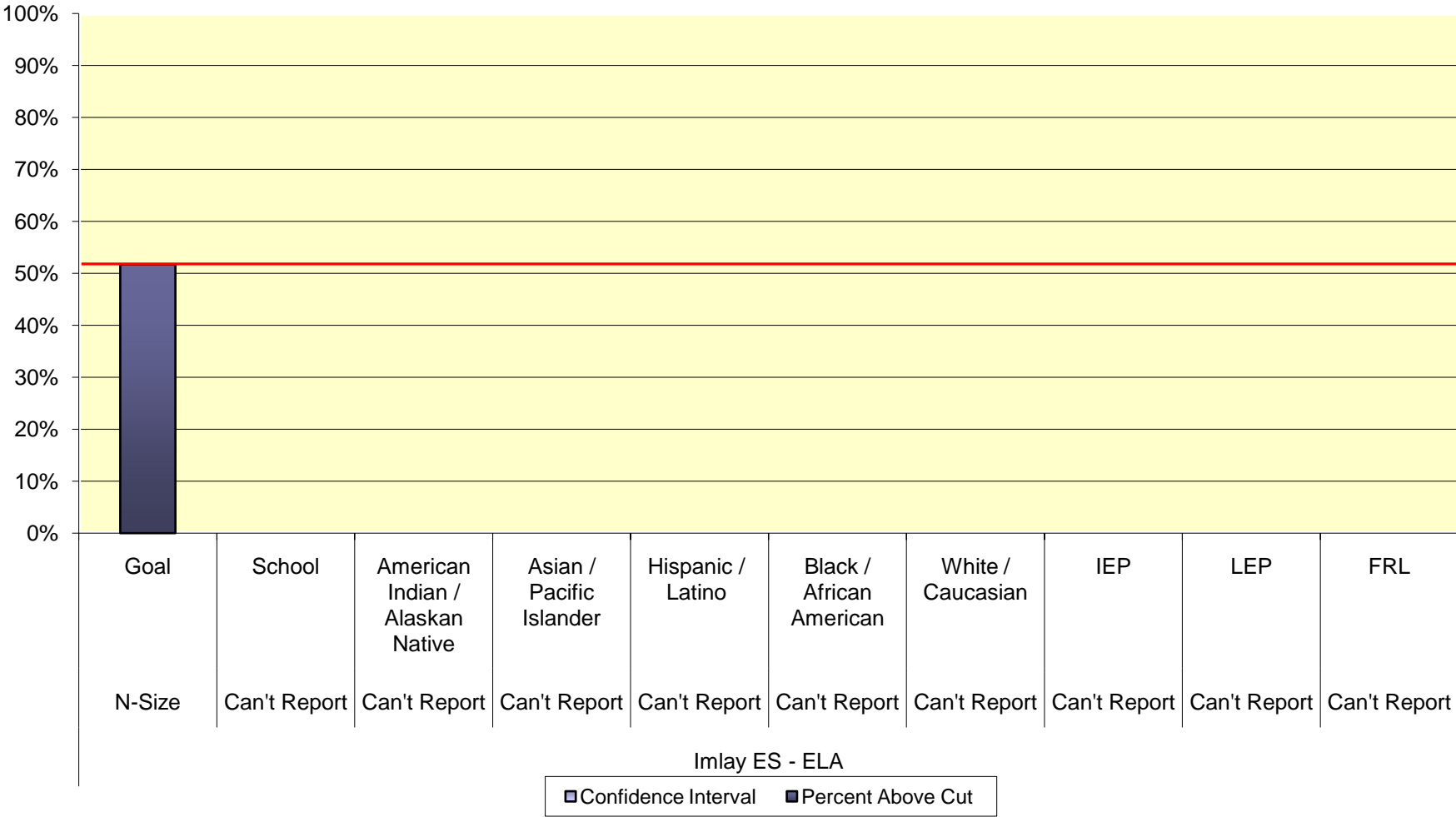
**Color Key**

<b>NA</b>	Participation Rate Analysis Not Applicable; Sample Size = 0
	Participation Rate Target Not Met
Appealed	Participation Rate Target Met Through Appeal

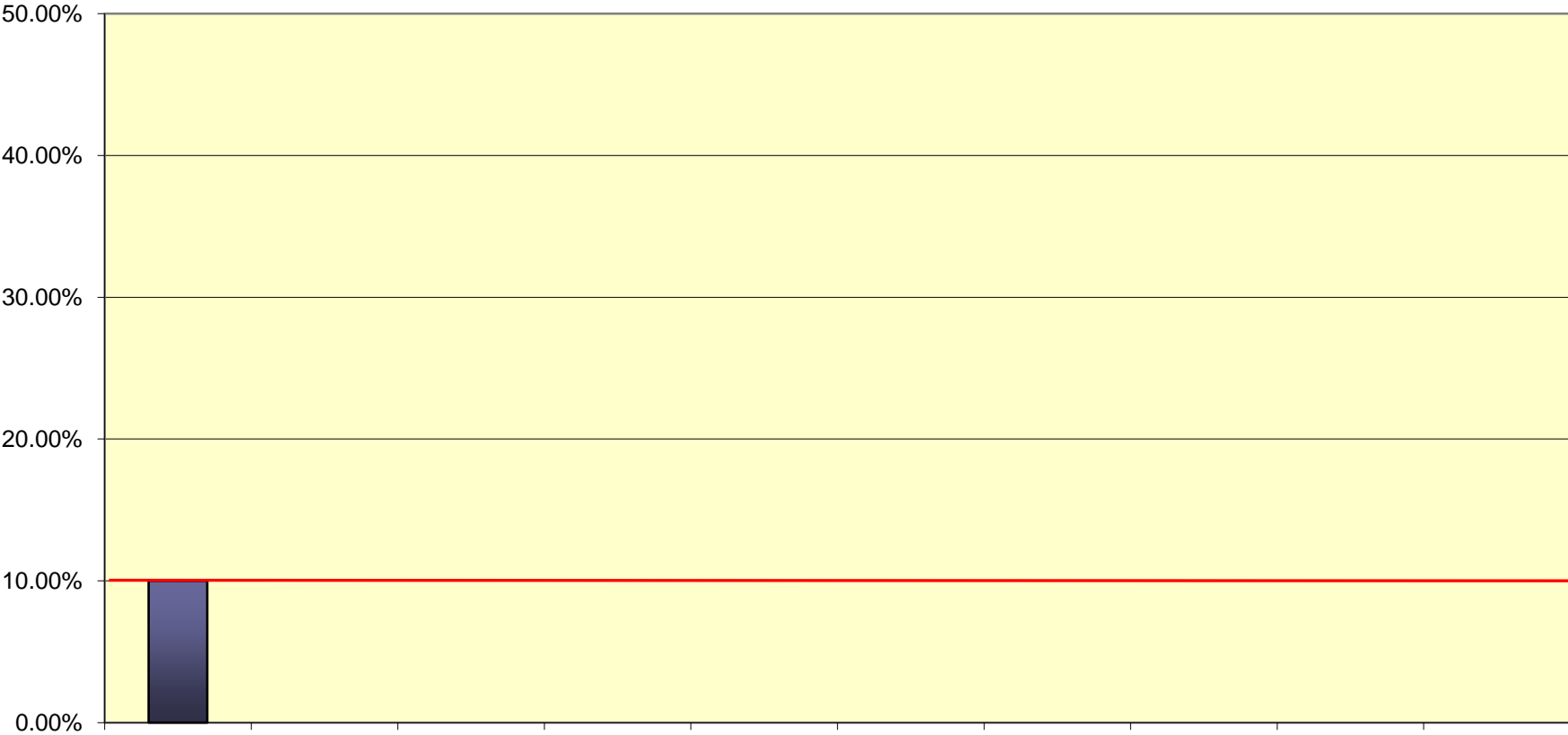
**Participation Rate Goals**

Group Size	Goal
N>=20	95%
N<20	N-1

## 2008-2009 School Year ELA Status

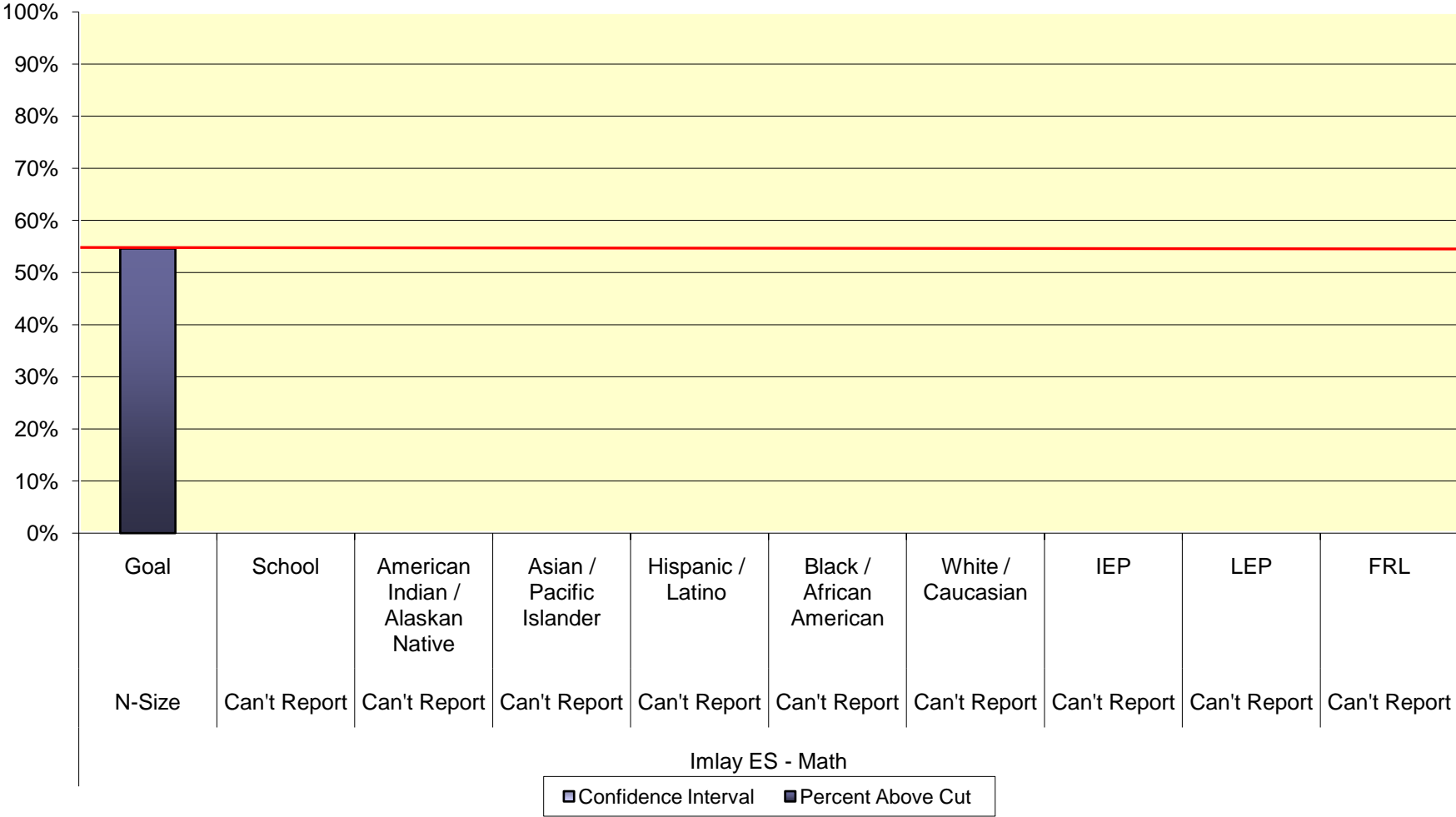


# 2008-2009 School Year ELA Reduction in Non-Proficient Students

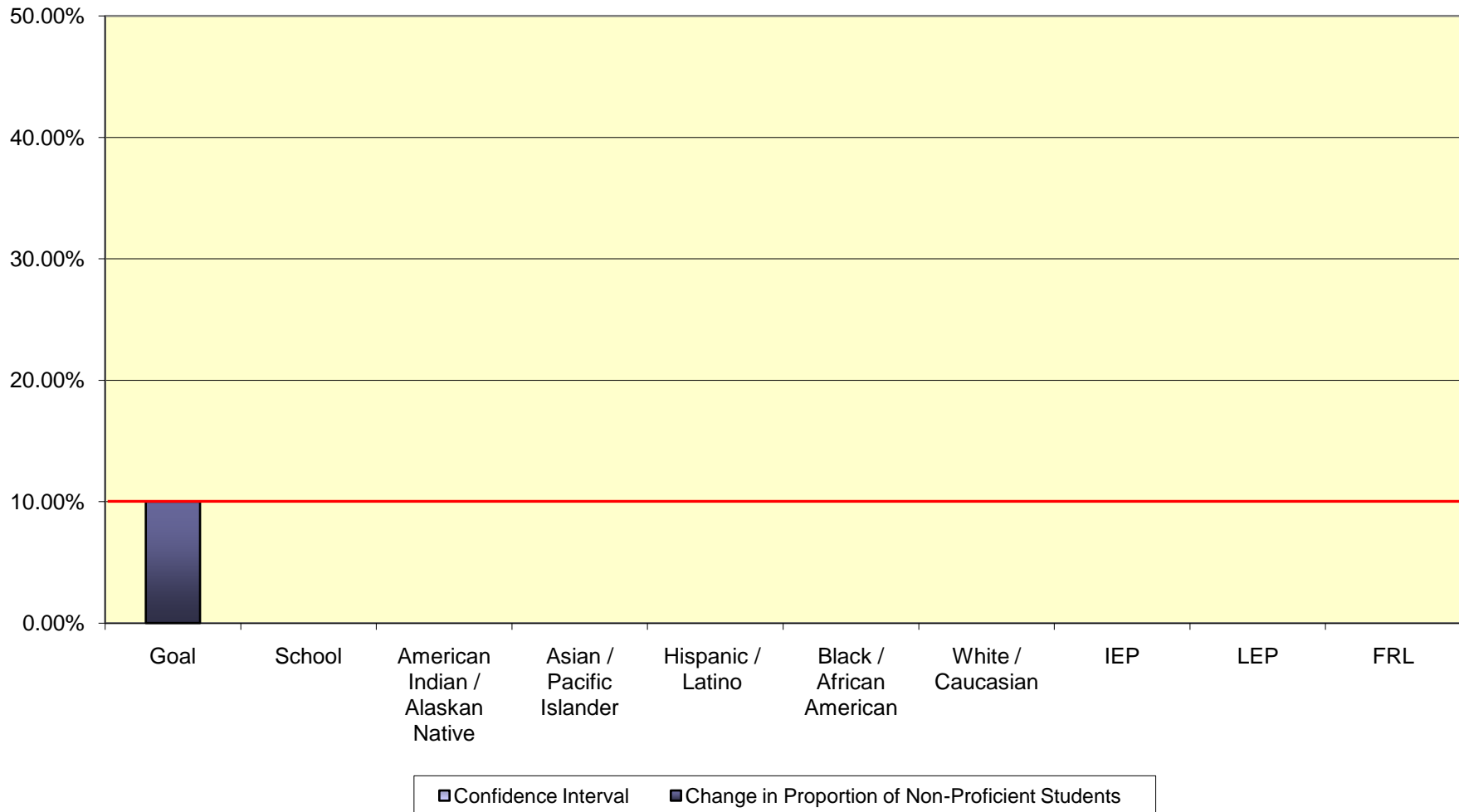


■ Confidence Interval   ■ Change in Proportion of Non-Proficient Students

## 2008-2009 School Year Math Status



## 2008-2009 School Year Math Reduction in Non-Proficient Students



**School Year 2008-2009**

Imlay ES	Graduation Rate	Average Daily Attendance		Make Other Indicator?
		2008-2009	2007-2008	
Population		2008-2009	2007-2008	
School		96.85%	-	Yes
American Indian / Alaskan Native		-	-	NA
Asian / Pacific Islander		-	-	NA
Hispanic / Latino		-	-	NA
Black / African American		-	-	NA
White / Caucasian		96.85%	-	Yes
IEP		-	-	NA
LEP		-	-	NA
FRL		96.51%	-	Yes

Color / Code Key	
	School Did Not Make AYP Due To Other Indicator
	Other Indicator Target For Disaggregated Group Not Met
	WARNING: Other Indicator Target Met Due to Growth
	Other Indicator Target Met Through Appeal
-	Other Indicator Data Not Available
NA	Not Applicable (No Data to Analyze)

Source Data for Graphs	Current Year AYP Data				Previous AYP Data			Growth Analysis		
Imlay ES	2008-2009	Population	PAC	CI	PAC	N-Size	CI	Change	CI Change	Safe Harbor
<b>Imlay ES - ELA</b>	N-Size	Goal	51.70%					10.00%		
	Can't Report	School	CR	CR	CR	CR	CR	CR	CR	CR
	Can't Report	American Indian / Alaskan Native	CR	CR	CR	CR	CR	CR	CR	CR
	Can't Report	Asian / Pacific Islander	CR	CR	CR	CR	CR	CR	CR	CR
	Can't Report	Hispanic / Latino	CR	CR	CR	CR	CR	CR	CR	CR
	Can't Report	Black / African American	CR	CR	CR	CR	CR	CR	CR	CR
	Can't Report	White / Caucasian	CR	CR	CR	CR	CR	CR	CR	CR
	Can't Report	IEP	CR	CR	CR	CR	CR	CR	CR	CR
	Can't Report	LEP	CR	CR	CR	CR	CR	CR	CR	CR
	Can't Report	FRL	CR	CR	CR	CR	CR	CR	CR	CR
<b>Imlay ES - Math</b>	N-Size	Goal	54.60%					10.00%		
	Can't Report	School	CR	CR	CR	CR	CR	CR	CR	CR
	Can't Report	American Indian / Alaskan Native	CR	CR	CR	CR	CR	CR	CR	CR
	Can't Report	Asian / Pacific Islander	CR	CR	CR	CR	CR	CR	CR	CR
	Can't Report	Hispanic / Latino	CR	CR	CR	CR	CR	CR	CR	CR
	Can't Report	Black / African American	CR	CR	CR	CR	CR	CR	CR	CR
	Can't Report	White / Caucasian	CR	CR	0.00%	3.0	0.00%	CR	CR	CR
	Can't Report	IEP	CR	CR	0.00%	2.0	0.00%	CR	CR	CR
	Can't Report	LEP	CR	CR	CR	CR	CR	CR	CR	CR
	Can't Report	FRL	CR	CR	0.00%	4.0	0.00%	CR	CR	CR

School Year 2008-2009