

School Year 2008-2009

# Alamo Elementary School

Adequate Yearly Progress Report for 2008-2009 School Year \*FINAL RESULTS

School ID Number: 2178.1

**School District:** Clark  
**Grades Served:** Kindergarten - Grade 5  
**Principal:** Rodney Kissinger  
**Address:** 7455 El Camino Rd  
Las Vegas, NV 89139  
**Phone:** 702-799-2590

**School Designation:** Adequate

**Designation Area Status:**

ELA	Adequate
Math	Adequate
Other Indicator	Adequate

**Student Demographics:**

**Eligible Population:** 492 students

Race & Ethnicity Composition	
American Indian / Alaskan Native	0.8%
Asian / Pacific Islander	31.7%
Hispanic / Latino	24.8%
Black / African American	14.0%
White / Caucasian	28.7%

Students with an IEP:	8.3%
Limited English Proficient (LEP) Students:	23.0%
Students Receiving Free or Reduced Price Lunch:	26.4%

**Students Continuously Enrolled:** 88.6%

Title I Funded School? No

**AYP Classification Information:**

Alamo Elementary School has been classified as a school which demonstrated Adequate Yearly Progress during the 2008-2009 school year. Classification as demonstrating AYP is due to the school's meeting all No Child Left Behind criteria in the areas of English language arts (ELA), mathematics, and the school-wide other indicator.

**AYP Report Information:**

This report contains information regarding the performance of this school during the 2008-2009 school year under the NCLB accountability model. Worksheet tabs, along the bottom of this file, report performance of the school in all AYP criteria. Click on any of the 'Questions?' links in this report to get more information.

### Alamo ES 2008-2009 AYP Results

Population	ELA Participation	ELA Achievement		Math Participation	Math Achievement		Other Indicator
		ELA Status	ELA Safe Harbor		Math Status	Math Safe Harbor	
School	Yes	Yes	-	Yes	Yes	-	Yes
American Indian / Alaskan Native	Yes	***	***	Yes	***	***	
Asian / Pacific Islander	Yes	Yes	-	Yes	Yes	-	
Hispanic / Latino	Yes	Yes	-	Yes	Yes	-	
Black / African American	Yes	Yes	-	Yes	Yes	-	
White / Caucasian	Yes	Yes	-	Yes	Yes	-	
IEP	Yes	UA 2YR Ap	-	Yes	UA 2YR Ap	-	
LEP	Yes	Yes	-	Yes	Yes	-	
FRL	Yes	Yes	-	Yes	Yes	-	

Color Key	
	Did Not Make Adequate Yearly Progress
	WARNING: Status Level Below Baseline
	Sample Size Too Small to Evaluate
	Criteria Met Through Appeal

NA Denotes Sample Size = 0; Participation Rate Analysis Not Applicable

\*\*\* Denotes Sample Size < 25; Status and Safe Harbor Evaluations Not Applicable

\* Denotes Safe Harbor Not Made Due To Other Indicator

- Denotes Data Not Available

UA Denotes 2 or 3 Year Averaging Appeal Applied

**School Year 2008-2009**

Alamo ES	ELA Participation				Math Participation				
	Population	Enrollment	ELA Participation (N >= 20)	ELA Participation (N < 20)	Make ELA Participation?	Enrollment	Math Participation (N >= 20)	Math Participation (N < 20)	Make Math Participation?
School	490.5	100.00%			Yes	492.0	100.00%		Yes
American Indian / Alaskan Native	4.0	-	4.0		Yes	4.0	-	4.0	Yes
Asian / Pacific Islander	156.0	100.00%			Yes	156.0	100.00%		Yes
Hispanic / Latino	121.0	100.00%			Yes	122.0	100.00%		Yes
Black / African American	69.0	100.00%			Yes	69.0	100.00%		Yes
White / Caucasian	140.5	100.00%			Yes	141.0	100.00%		Yes
IEP	41.0	100.00%			Yes	41.0	100.00%		Yes
LEP	112.5	100.00%			Yes	113.0	100.00%		Yes
FRL	128.5	100.00%			Yes	130.0	100.00%		Yes

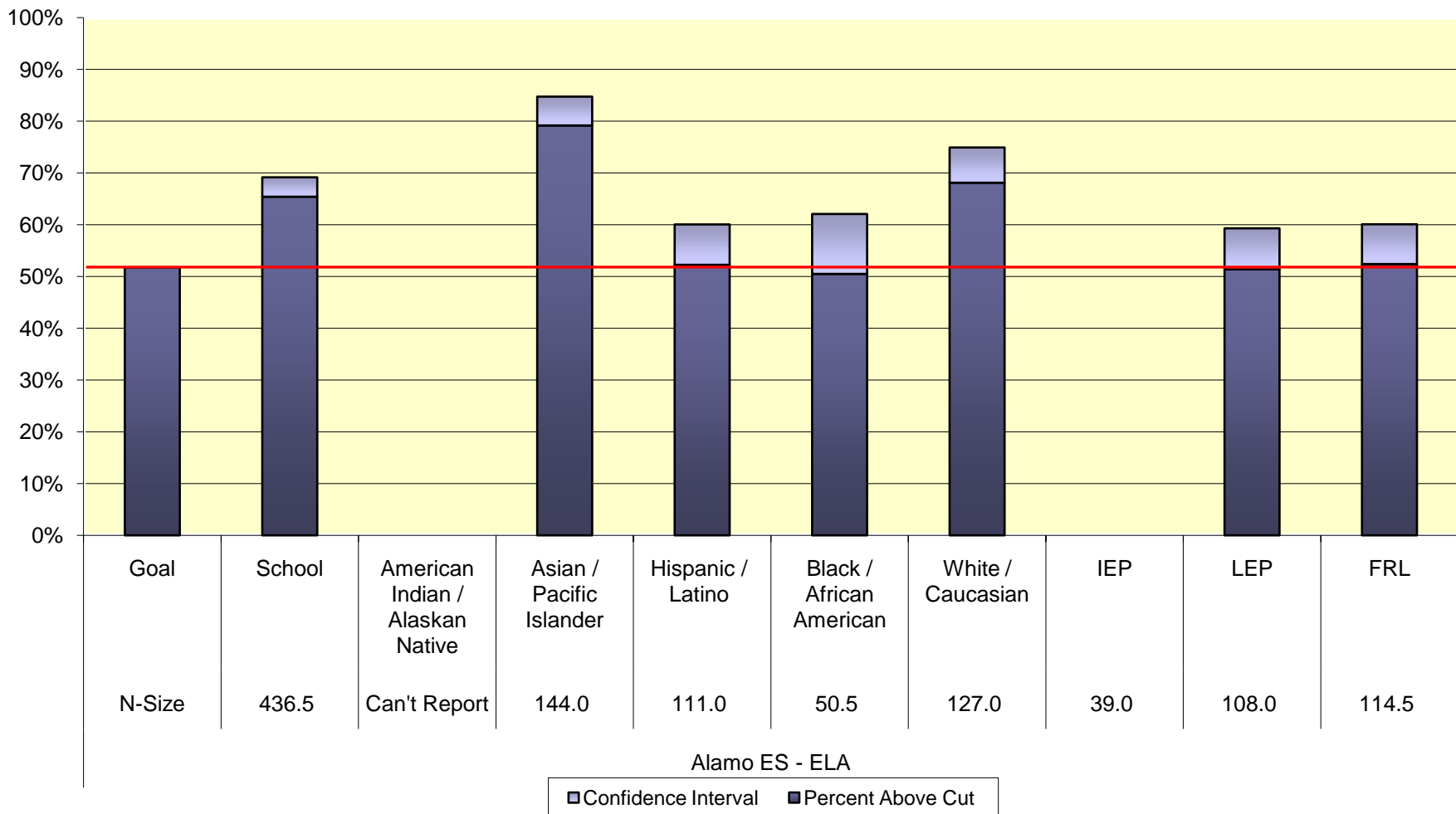
**Color Key**

NA	Participation Rate Analysis Not Applicable; Sample Size = 0
	Participation Rate Target Not Met
Appealed	Participation Rate Target Met Through Appeal

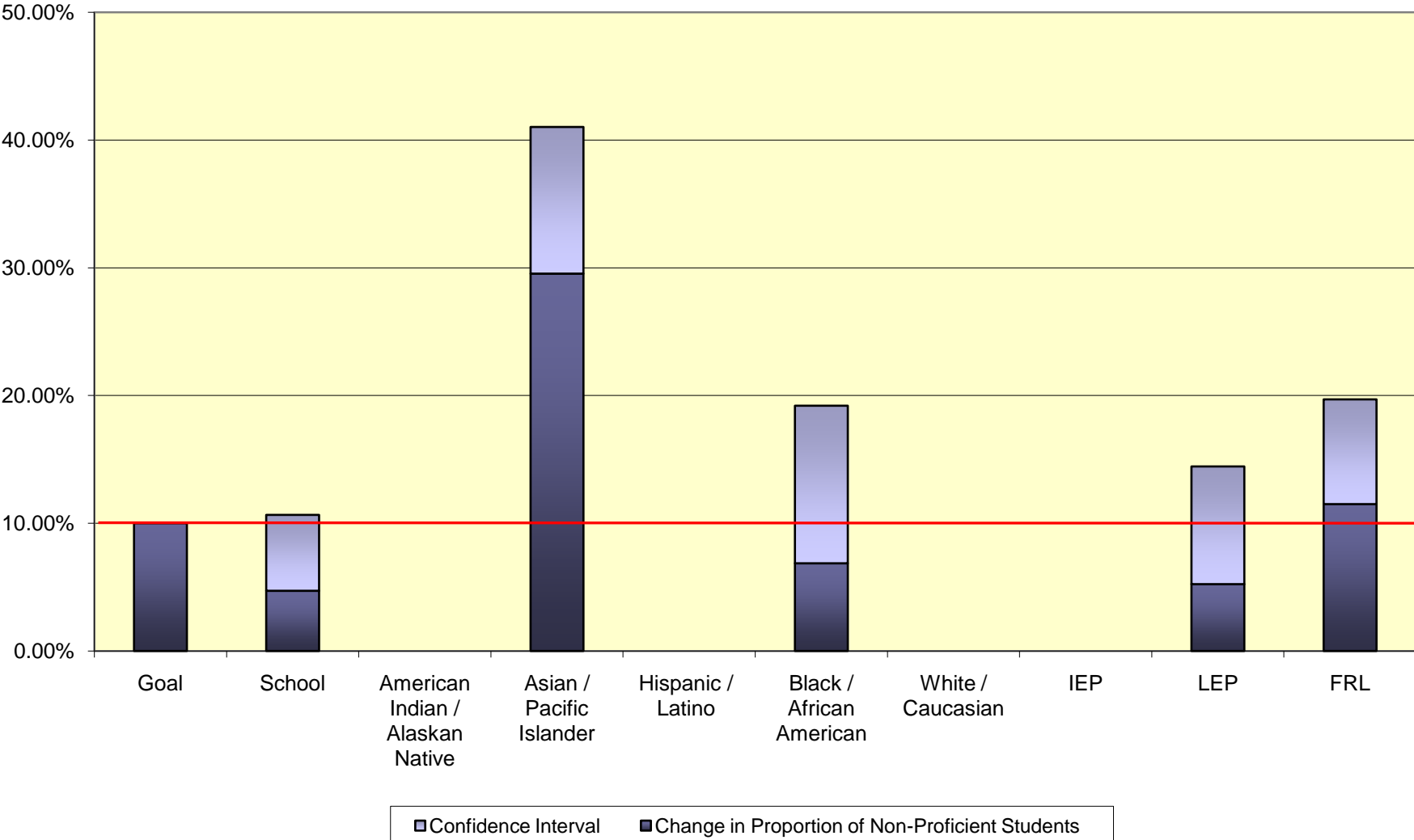
**Participation Rate Goals**

Group Size	Goal
N>=20	95%
N<20	N-1

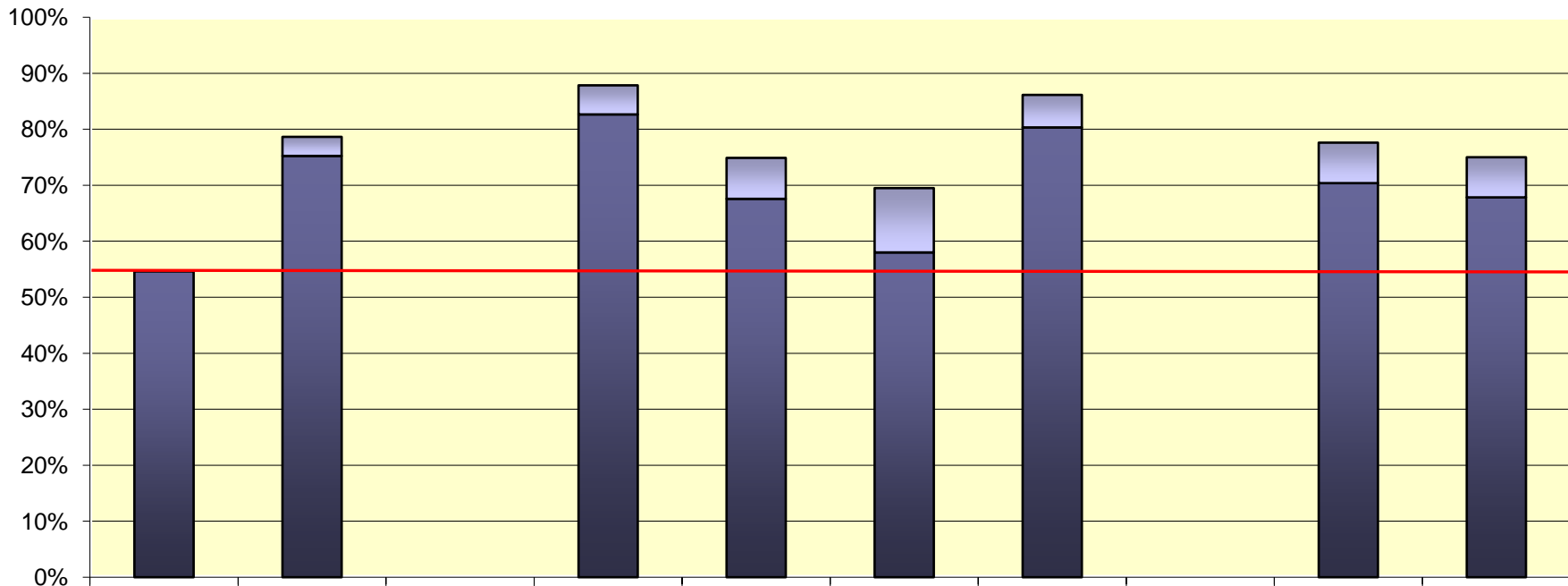
## 2008-2009 School Year ELA Status



## 2008-2009 School Year ELA Reduction in Non-Proficient Students



## 2008-2009 School Year Math Status

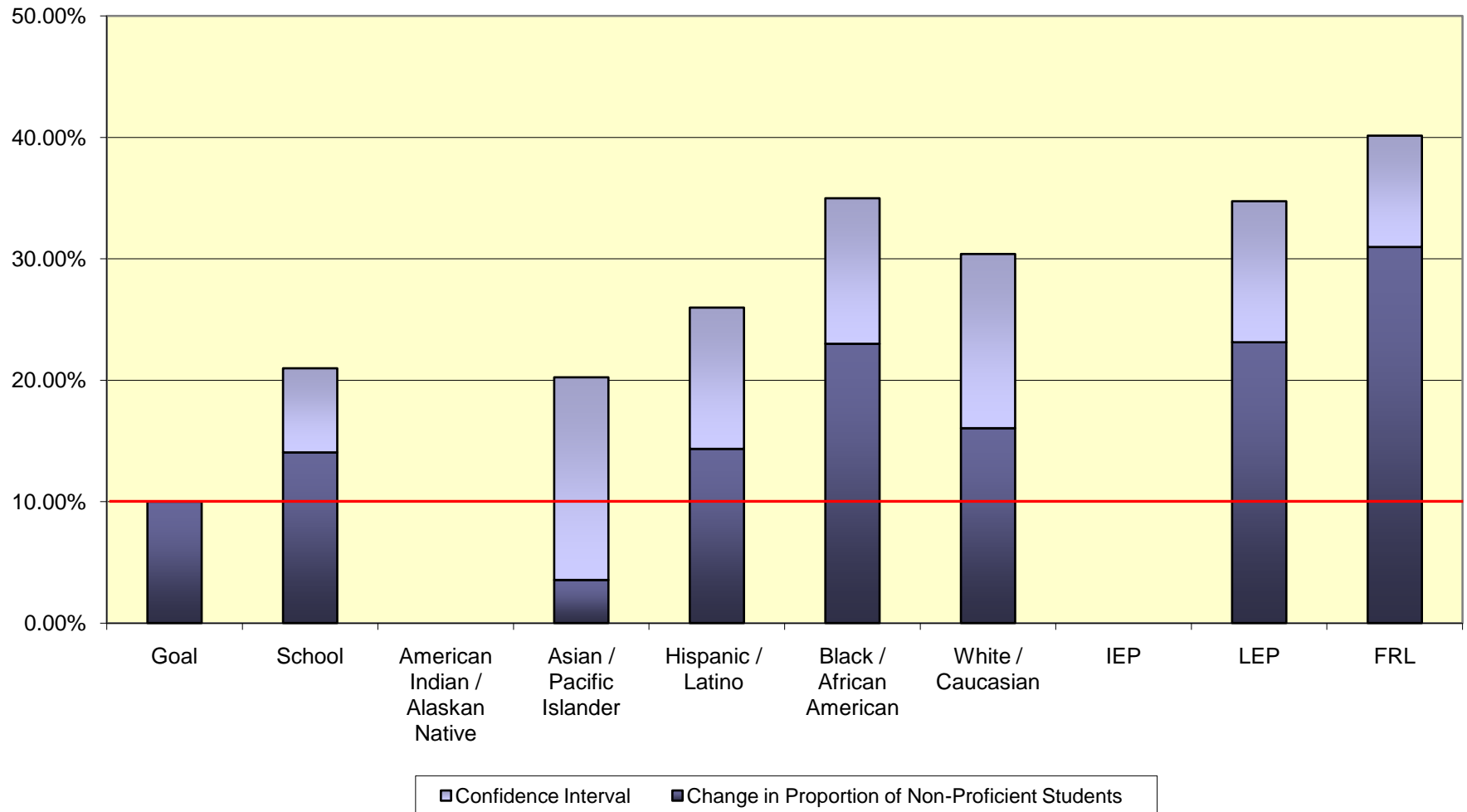


Goal	School	American Indian / Alaskan Native	Asian / Pacific Islander	Hispanic / Latino	Black / African American	White / Caucasian	IEP	LEP	FRL
N-Size	436.0	Can't Report	144.0	111.0	50.0	127.0	39.0	108.0	115.0

Alamo ES - Math

Confidence Interval
  Percent Above Cut

## 2008-2009 School Year Math Reduction in Non-Proficient Students



**School Year 2008-2009**

<b>Alamo ES</b>	<b>Graduation Rate</b>	<b>Average Daily Attendance</b>		
Population		2008-2009	2007-2008	<b>Make Other Indicator?</b>
School		96.19%	-	Yes
American Indian / Alaskan Native		96.75%	-	Yes
Asian / Pacific Islander		97.51%	-	Yes
Hispanic / Latino		95.92%	-	Yes
Black / African American		95.25%	-	Yes
White / Caucasian		95.54%	-	Yes
IEP		95.53%	-	Yes
LEP		96.84%	-	Yes
FRL		95.17%	-	Yes

<b>Color / Code Key</b>	
	School Did Not Make AYP Due To Other Indicator
	Other Indicator Target For Disaggregated Group Not Met
	WARNING: Other Indicator Target Met Due to Growth
	Other Indicator Target Met Through Appeal
-	Other Indicator Data Not Available
NA	Not Applicable (No Data to Analyze)

Source Data for Graphs	Current Year AYP Data				Previous AYP Data			Growth Analysis		
Alamo ES	2008-2009	Population	PAC	CI				Change	CI Change	Safe Harbor
Alamo ES - ELA	N-Size	Goal	51.70%					10.00%		
	436.5	School	65.41%	3.75%	63.70%	460.0	3.69%	4.71%	5.94%	10.65%
	Can't Report	American Indian / Alaskan Native	CR	CR	CR	CR	CR	CR	CR	CR
	144.0	Asian / Pacific Islander	79.17%	5.57%	70.43%	150.5	6.12%	29.54%	11.48%	41.02%
	111.0	Hispanic / Latino	52.25%	7.80%	55.07%	103.5	8.04%	0.00%	0.00%	0.00%
	50.5	Black / African American	50.50%	11.57%	46.85%	55.5	11.02%	6.86%	12.34%	19.20%
	127.0	White / Caucasian	68.11%	6.80%	70.45%	145.5	6.22%	0.00%	0.00%	0.00%
	39.0	IEP	0.00%	0.00%	46.30%	54.0	11.16%	0.00%	0.00%	0.00%
	108.0	LEP	51.39%	7.91%	48.70%	96.5	8.37%	5.23%	9.21%	14.45%
	114.5	FRL	52.40%	7.68%	46.22%	119.0	7.52%	11.50%	8.20%	19.70%
Alamo ES - Math	N-Size	Goal	54.60%					10.00%		
	436.0	School	75.23%	3.40%	71.18%	458.0	3.48%	14.05%	6.93%	20.98%
	Can't Report	American Indian / Alaskan Native	CR	CR	0.00%	5.0	0.00%	CR	CR	CR
	144.0	Asian / Pacific Islander	82.64%	5.19%	82.00%	150.0	5.16%	3.55%	16.69%	20.24%
	111.0	Hispanic / Latino	67.57%	7.31%	62.14%	103.0	7.86%	14.35%	11.63%	25.98%
	50.0	Black / African American	58.00%	11.48%	45.45%	55.0	11.04%	23.00%	11.99%	34.99%
	127.0	White / Caucasian	80.32%	5.80%	76.55%	145.0	5.79%	16.05%	14.34%	30.39%
	39.0	IEP	0.00%	0.00%	58.18%	55.0	10.94%	0.00%	0.00%	0.00%
	108.0	LEP	70.37%	7.23%	61.46%	96.0	8.17%	23.12%	11.61%	34.74%
	115.0	FRL	67.83%	7.17%	53.39%	118.0	7.55%	30.97%	9.17%	40.14%

School Year 2008-2009