

School Year 2008-2009

Bendorf Elementary School

Adequate Yearly Progress Report for 2008-2009 School Year *FINAL RESULTS

School ID Number: 2138.1

School District: Clark
 Grades Served: Kindergarten - Grade 5
 Principal: Jerre Moore
 Address: 3550 W Kevin St
 Las Vegas, NV 89147
 Phone: 702-799-4440

School Designation: Adequate

Designation Area Status:

ELA	Adequate
Math	Adequate
Other Indicator	Adequate

Student Demographics:

Eligible Population: 377 students

Race & Ethnicity Composition	
American Indian / Alaskan Native	1.1%
Asian / Pacific Islander	19.9%
Hispanic / Latino	23.1%
Black / African American	16.7%
White / Caucasian	39.3%

Students with an IEP:	10.9%
Limited English Proficient (LEP) Students:	19.4%
Students Receiving Free or Reduced Price Lunch:	27.3%

Students Continuously Enrolled: 85.9%

Title I Funded School? No

AYP Classification Information:

Bendorf Elementary School has been classified as a school which demonstrated Adequate Yearly Progress during the 2008-2009 school year. Classification as demonstrating AYP is due to the school's meeting all No Child Left Behind criteria in the areas of English language arts (ELA), mathematics, and the school-wide other indicator.

AYP Report Information:

This report contains information regarding the performance of this school during the 2008-2009 school year under the NCLB accountability model. Worksheet tabs, along the bottom of this file, report performance of the school in all AYP criteria. Click on any of the 'Questions?' links in this report to get more information.

Bendorf ES 2008-2009 AYP Results

Population	ELA Participation	ELA Achievement		Math Participation	Math Achievement		Other Indicator
		ELA Status	ELA Safe Harbor		Math Status	Math Safe Harbor	
School	Yes	Yes	-	Yes	Yes	-	Yes
American Indian / Alaskan Native	Yes	***	***	Yes	***	***	
Asian / Pacific Islander	Yes	Yes	-	Yes	Yes	-	
Hispanic / Latino	Yes	Yes	-	Yes	Yes	-	
Black / African American	Yes	Yes	-	Yes	Yes	-	
White / Caucasian	Yes	Yes	-	Yes	Yes	-	
IEP	Yes	Yes	-	Yes	Yes	-	
LEP	Yes	Yes	-	Yes	Yes	-	
FRL	Yes	Yes	-	Yes	Yes	-	

Color Key	
	Did Not Make Adequate Yearly Progress
	WARNING: Status Level Below Baseline
	Sample Size Too Small to Evaluate
	Criteria Met Through Appeal

NA Denotes Sample Size = 0; Participation Rate Analysis Not Applicable

*** Denotes Sample Size < 25; Status and Safe Harbor Evaluations Not Applicable

* Denotes Safe Harbor Not Made Due To Other Indicator

- Denotes Data Not Available

UA Denotes 2 or 3 Year Averaging Appeal Applied

School Year 2008-2009

Bendorf ES	ELA Participation				Math Participation			
	Enrollment	ELA Participation (N >= 20)	ELA Participation (N < 20)	Make ELA Participation?	Enrollment	Math Participation (N >= 20)	Math Participation (N < 20)	Make Math Participation?
School	375.5	99.73%		Yes	377.0	99.73%		Yes
American Indian / Alaskan Native	4.0	-	4.0	Yes	4.0	-	4.0	Yes
Asian / Pacific Islander	75.5	100.00%		Yes	75.0	100.00%		Yes
Hispanic / Latino	86.0	98.84%		Yes	87.0	98.85%		Yes
Black / African American	63.5	100.00%		Yes	63.0	100.00%		Yes
White / Caucasian	146.5	100.00%		Yes	148.0	100.00%		Yes
IEP	42.0	100.00%		Yes	41.0	100.00%		Yes
LEP	73.5	100.00%		Yes	73.0	100.00%		Yes
FRL	102.5	100.00%		Yes	103.0	100.00%		Yes

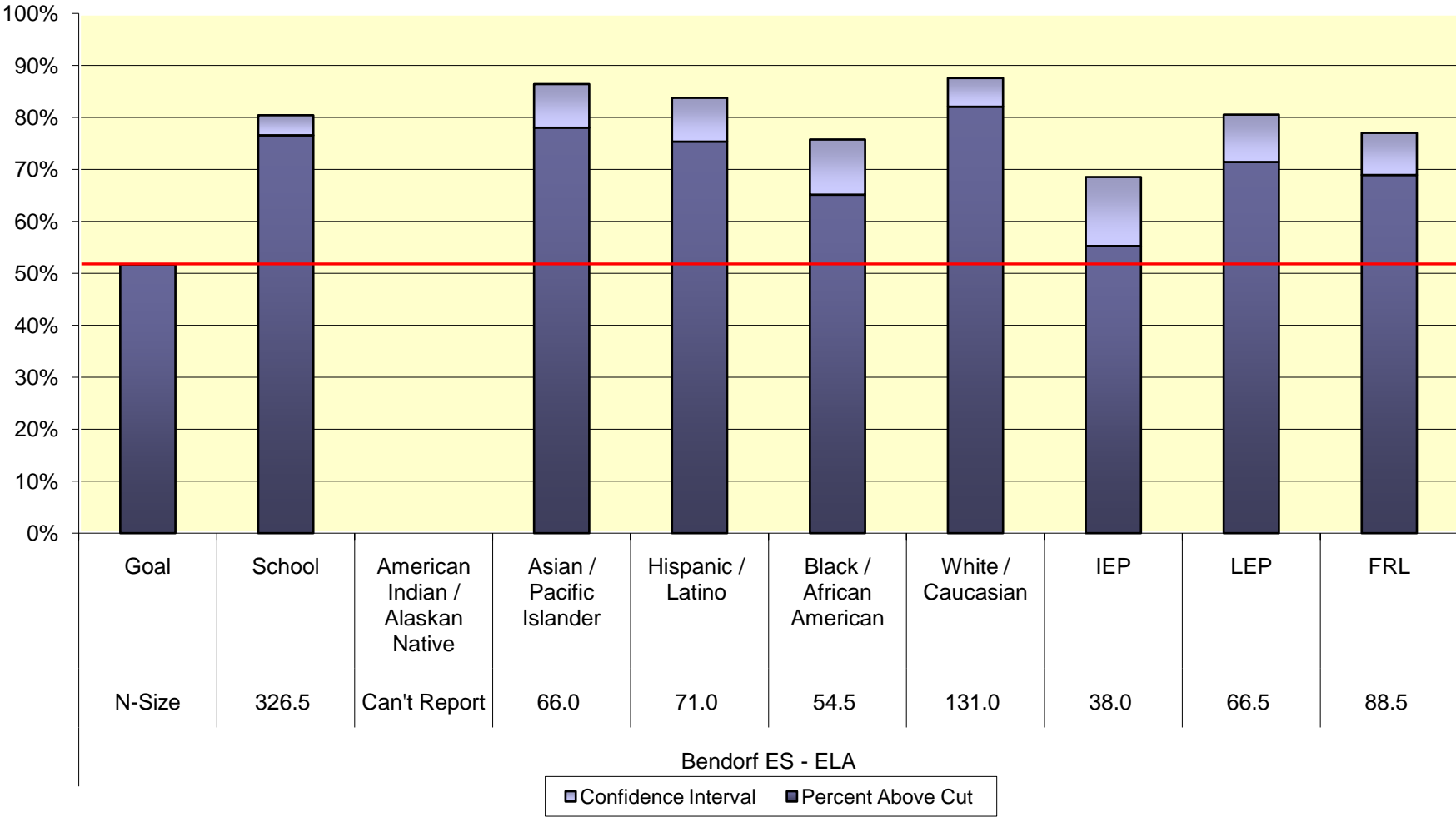
Color Key

NA	Participation Rate Analysis Not Applicable; Sample Size = 0
	Participation Rate Target Not Met
Appealed	Participation Rate Target Met Through Appeal

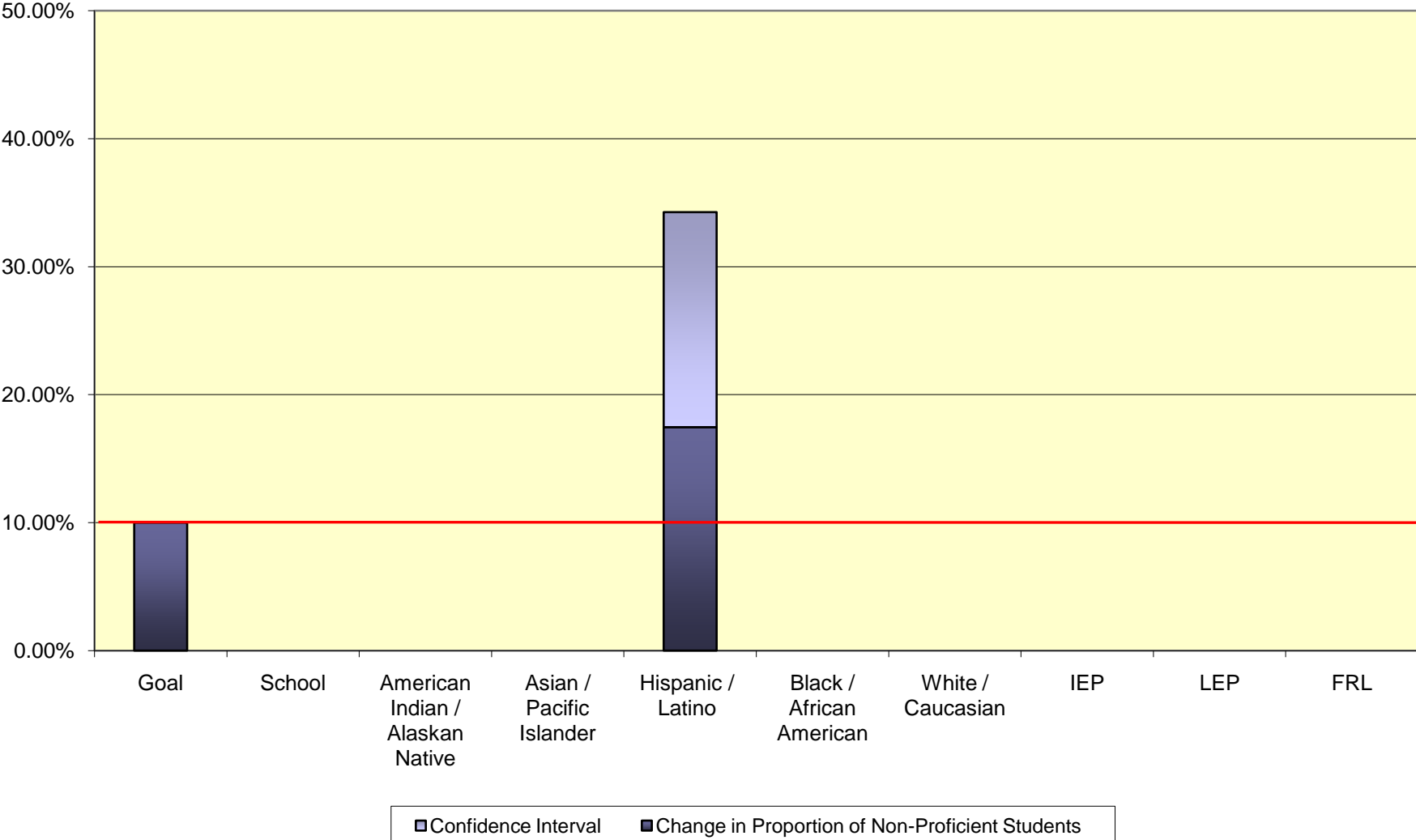
Participation Rate Goals

Group Size	Goal
N>=20	95%
N<20	N-1

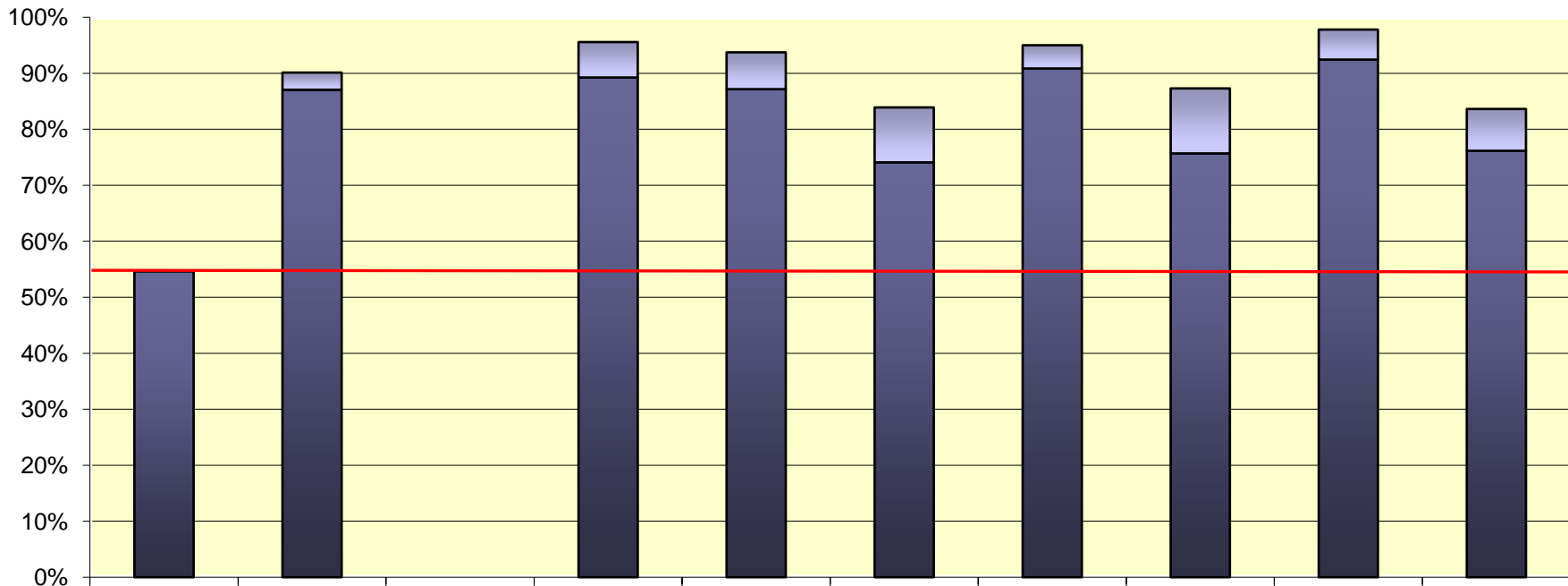
2008-2009 School Year ELA Status



2008-2009 School Year ELA Reduction in Non-Proficient Students



2008-2009 School Year Math Status

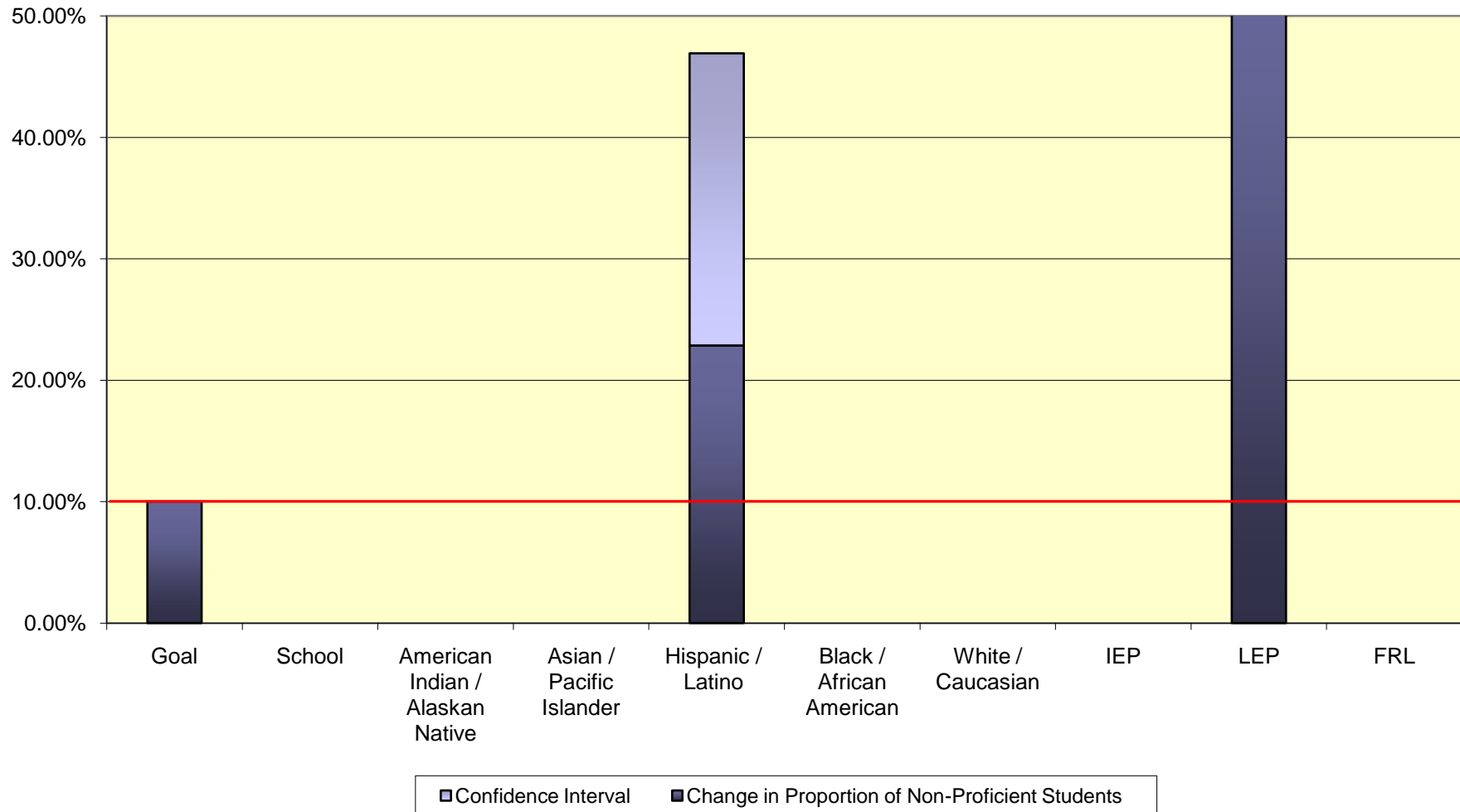


Goal	School	American Indian / Alaskan Native	Asian / Pacific Islander	Hispanic / Latino	Black / African American	White / Caucasian	IEP	LEP	FRL
N-Size	324.0	Can't Report	65.0	70.0	54.0	131.0	37.0	66.0	88.0

Bendorf ES - Math

Confidence Interval
 Percent Above Cut

2008-2009 School Year Math Reduction in Non-Proficient Students



School Year 2008-2009

Bendorf ES	Graduation Rate	Average Daily Attendance		Make Other Indicator?
		2008-2009	2007-2008	
Population		2008-2009	2007-2008	
School		95.45%	-	Yes
American Indian / Alaskan Native		94.66%	-	Yes
Asian / Pacific Islander		96.85%	-	Yes
Hispanic / Latino		95.14%	-	Yes
Black / African American		95.31%	-	Yes
White / Caucasian		95.01%	-	Yes
IEP		94.50%	-	Yes
LEP		96.32%	-	Yes
FRL		94.48%	-	Yes

Color / Code Key	
	School Did Not Make AYP Due To Other Indicator
	Other Indicator Target For Disaggregated Group Not Met
	WARNING: Other Indicator Target Met Due to Growth
	Other Indicator Target Met Through Appeal
-	Other Indicator Data Not Available
NA	Not Applicable (No Data to Analyze)

Source Data for Graphs	Current Year AYP Data				Previous AYP Data			Growth Analysis		
Bendorf ES	2008-2009	Population	PAC	CI	PAC	N-Size	CI	Change	CI Change	Safe Harbor
Bendorf ES - ELA	N-Size	Goal	51.70%					10.00%		
	326.5	School	76.57%	3.86%	79.44%	357.5	3.52%	0.00%	0.00%	0.00%
	Can't Report	American Indian / Alaskan Native	CR	CR	CR	CR	CR	CR	CR	CR
	66.0	Asian / Pacific Islander	78.03%	8.38%	83.65%	79.5	6.82%	0.00%	0.00%	0.00%
	71.0	Hispanic / Latino	75.35%	8.41%	70.14%	72.0	8.87%	17.46%	16.80%	34.26%
	54.5	Black / African American	65.14%	10.62%	68.10%	58.0	10.07%	0.00%	0.00%	0.00%
	131.0	White / Caucasian	82.06%	5.51%	86.81%	144.0	4.64%	0.00%	0.00%	0.00%
	38.0	IEP	55.26%	13.27%	62.63%	49.5	11.31%	0.00%	0.00%	0.00%
	66.5	LEP	71.43%	9.11%	73.33%	67.5	8.85%	0.00%	0.00%	0.00%
	88.5	FRL	68.93%	8.09%	69.74%	97.5	7.65%	0.00%	0.00%	0.00%
Bendorf ES - Math	N-Size	Goal	54.60%					10.00%		
	324.0	School	87.04%	3.07%	88.17%	355.0	2.82%	0.00%	0.00%	0.00%
	Can't Report	American Indian / Alaskan Native	CR	CR	0.00%	4.0	0.00%	CR	CR	CR
	65.0	Asian / Pacific Islander	89.23%	6.32%	89.87%	79.0	5.58%	0.00%	0.00%	0.00%
	70.0	Hispanic / Latino	87.14%	6.58%	83.33%	72.0	7.22%	22.86%	24.06%	46.92%
	54.0	Black / African American	74.07%	9.81%	78.95%	57.0	8.88%	0.00%	0.00%	0.00%
	131.0	White / Caucasian	90.84%	4.15%	93.01%	143.0	3.51%	0.00%	0.00%	0.00%
	37.0	IEP	75.68%	11.60%	78.43%	51.0	9.47%	0.00%	0.00%	0.00%
	66.0	LEP	92.42%	5.36%	83.58%	67.0	7.44%	53.86%	22.92%	76.78%
	88.0	FRL	76.14%	7.47%	81.44%	97.0	6.49%	0.00%	0.00%	0.00%

School Year 2008-2009