

School Year 2008-2009

Denio Elementary School

Adequate Yearly Progress Report for 2008-2009 School Year *FINAL RESULTS

School ID Number: 7101.1

School District: Humboldt
Grades Served: Kindergarten - Grade 8
Principal: Carolyn Dufurrena
Address: 750 Juniper Ln
Denio, NV 89404
Phone: 775-941-0376

School Designation: Adequate

Designation Area Status:

ELA	Adequate
Math	Adequate
Other Indicator	Adequate

AYP Classification Information:

Denio Elementary School has been classified as a school which demonstrated Adequate Yearly Progress during the 2008-2009 school year. Classification as demonstrating AYP is due to the school's meeting all No Child Left Behind criteria in the areas of English language arts (ELA), mathematics, and the school-wide other indicator.

AYP Report Information:

This report contains information regarding the performance of this school during the 2008-2009 school year under the NCLB accountability model. Worksheet tabs, along the bottom of this file, report performance of the school in all AYP criteria. Click on any of the 'Questions?' links in this report to get more information.

Student Demographics:

Eligible Population: 12 students

Race & Ethnicity Composition	
American Indian / Alaskan Native	0.0%
Asian / Pacific Islander	0.0%
Hispanic / Latino	66.7%
Black / African American	0.0%
White / Caucasian	33.3%

Students with an IEP:	8.3%
Limited English Proficient (LEP) Students:	58.3%
Students Receiving Free or Reduced Price Lunch:	100.0%

Students Continuously Enrolled: 100.0%

Title I Funded School? Yes

Denio ES 2008-2009 AYP Results

Population	ELA Participation	ELA Achievement		Math Participation	Math Achievement		Other Indicator
		ELA Status	ELA Safe Harbor		Math Status	Math Safe Harbor	
School	Yes	Yes	-	Yes	Yes	-	Yes
American Indian / Alaskan Native	NA	***	***	NA	***	***	
Asian / Pacific Islander	NA	***	***	NA	***	***	
Hispanic / Latino	Yes	***	***	Yes	***	***	
Black / African American	NA	***	***	NA	***	***	
White / Caucasian	Yes	***	***	Yes	***	***	
IEP	Yes	***	***	Yes	***	***	
LEP	Yes	***	***	Yes	***	***	
FRL	Yes	***	***	Yes	***	***	

Color Key	
	Did Not Make Adequate Yearly Progress
	WARNING: Status Level Below Baseline
	Sample Size Too Small to Evaluate
	Criteria Met Through Appeal

NA Denotes Sample Size = 0; Participation Rate Analysis Not Applicable

*** Denotes Sample Size < 25; Status and Safe Harbor Evaluations Not Applicable

* Denotes Safe Harbor Not Made Due To Other Indicator

- Denotes Data Not Available

UA Denotes 2 or 3 Year Averaging Appeal Applied

School Year 2008-2009

Denio ES	ELA Participation				Math Participation			
	Enrollment	ELA Participation (N >= 20)	ELA Participation (N < 20)	Make ELA Participation?	Enrollment	Math Participation (N >= 20)	Math Participation (N < 20)	Make Math Participation?
School	12.0	-	12.0	Yes	12.0	-	12.0	Yes
American Indian / Alaskan Native	0.0	-	-	NA	0.0	-	-	NA
Asian / Pacific Islander	0.0	-	-	NA	0.0	-	-	NA
Hispanic / Latino	8.0	-	8.0	Yes	8.0	-	8.0	Yes
Black / African American	0.0	-	-	NA	0.0	-	-	NA
White / Caucasian	4.0	-	4.0	Yes	4.0	-	4.0	Yes
IEP	1.0	-	1.0	Yes	1.0	-	1.0	Yes
LEP	7.0	-	7.0	Yes	7.0	-	7.0	Yes
FRL	12.0	-	12.0	Yes	12.0	-	12.0	Yes

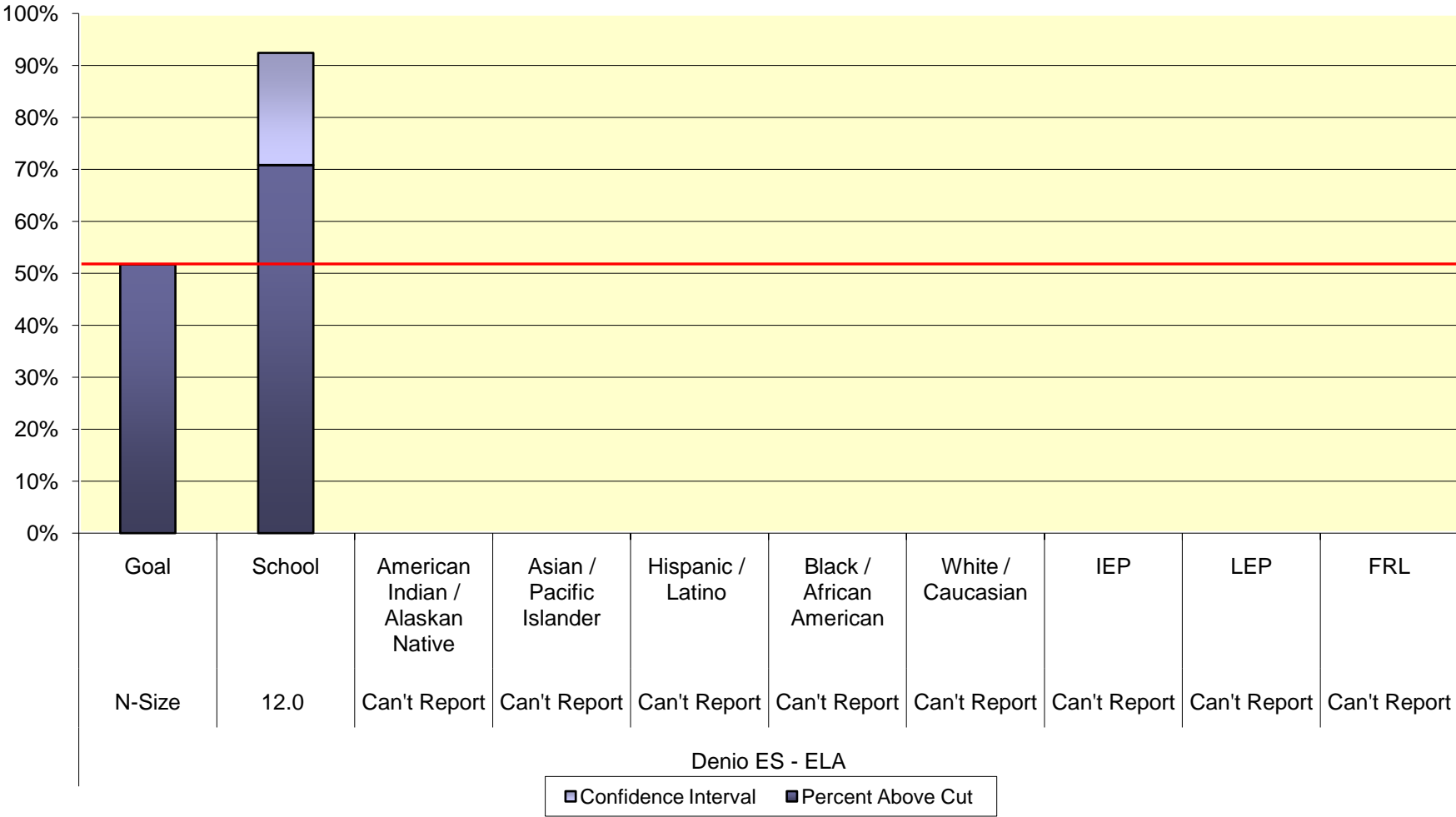
Color Key

NA	Participation Rate Analysis Not Applicable; Sample Size = 0
	Participation Rate Target Not Met
Appealed	Participation Rate Target Met Through Appeal

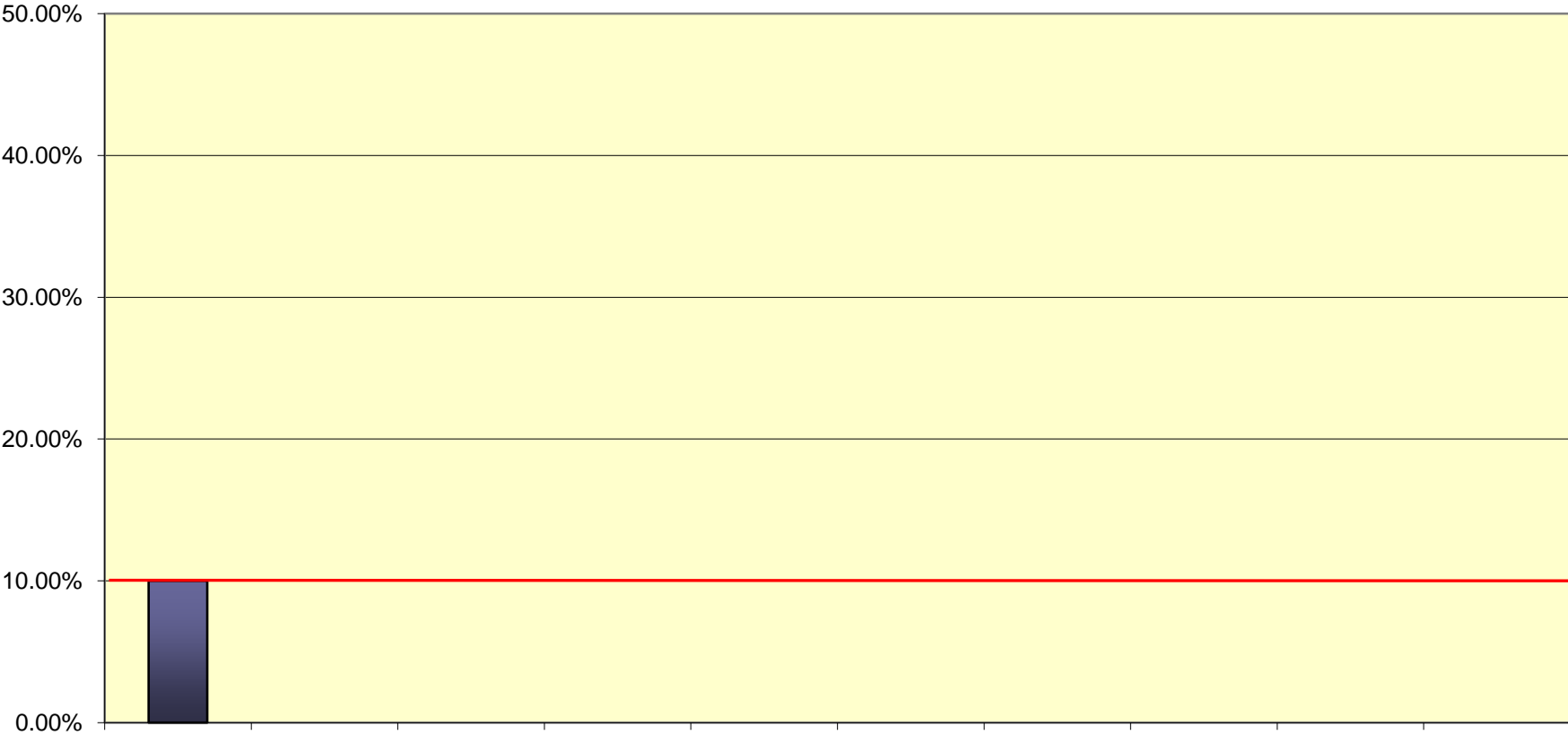
Participation Rate Goals

Group Size	Goal
N>=20	95%
N<20	N-1

2008-2009 School Year ELA Status

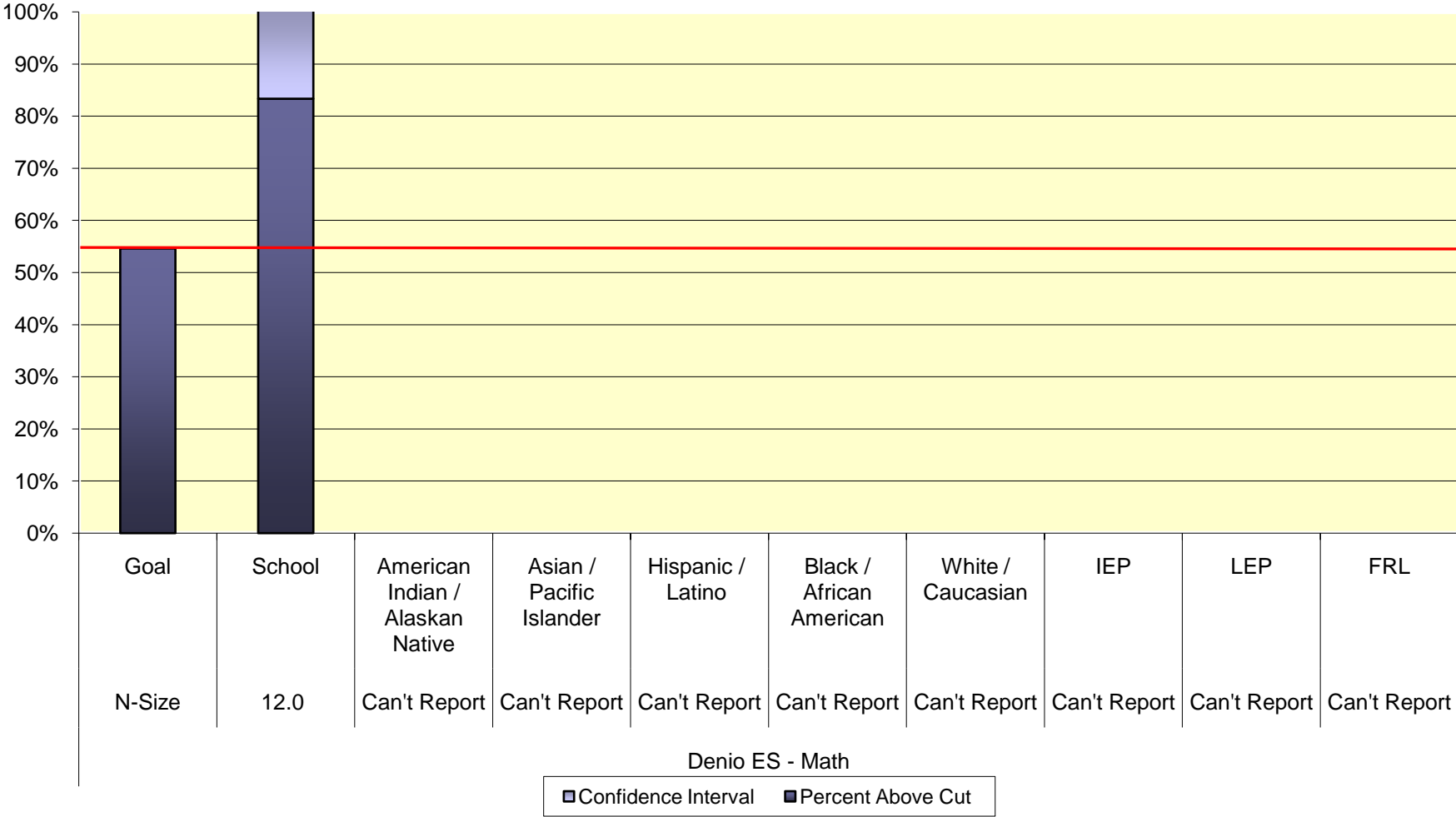


2008-2009 School Year ELA Reduction in Non-Proficient Students

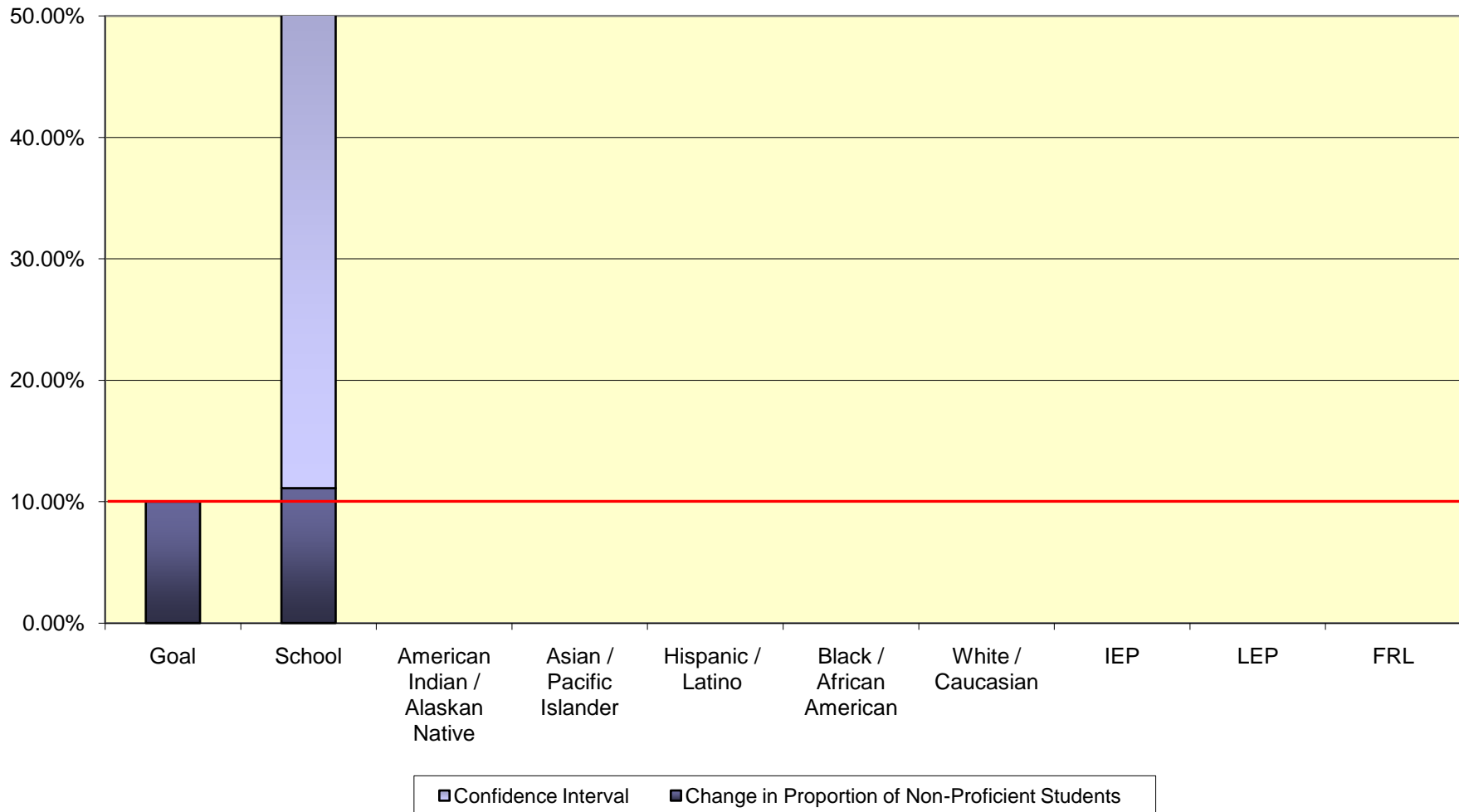


■ Confidence Interval ■ Change in Proportion of Non-Proficient Students

2008-2009 School Year Math Status



2008-2009 School Year Math Reduction in Non-Proficient Students



School Year 2008-2009

Denio ES	Graduation Rate	Average Daily Attendance		Make Other Indicator?
		2008-2009	2007-2008	
Population		2008-2009	2007-2008	
School		96.81%	-	Yes
American Indian / Alaskan Native		-	-	NA
Asian / Pacific Islander		-	-	NA
Hispanic / Latino		97.62%	-	Yes
Black / African American		-	-	NA
White / Caucasian		95.56%	-	Yes
IEP		100.00%	-	Yes
LEP		97.03%	-	Yes
FRL		97.70%	-	Yes

Color / Code Key	
	School Did Not Make AYP Due To Other Indicator
	Other Indicator Target For Disaggregated Group Not Met
	WARNING: Other Indicator Target Met Due to Growth
	Other Indicator Target Met Through Appeal
	- Other Indicator Data Not Available
	NA Not Applicable (No Data to Analyze)

Source Data for Graphs	Current Year AYP Data				Previous AYP Data			Growth Analysis		
Denio ES	2008-2009	Population	PAC	CI				Change	CI Change	Safe Harbor
Denio ES - ELA	N-Size	Goal	51.70%					10.00%		
	12.0	School	70.83%	21.58%	75.00%	16.0	17.81%	0.00%	0.00%	0.00%
	Can't Report	American Indian / Alaskan Native	CR	CR	CR	CR	CR	CR	CR	CR
	Can't Report	Asian / Pacific Islander	CR	CR	CR	CR	CR	CR	CR	CR
	Can't Report	Hispanic / Latino	CR	CR	63.64%	11.0	23.86%	CR	CR	CR
	Can't Report	Black / African American	CR	CR	CR	CR	CR	CR	CR	CR
	Can't Report	White / Caucasian	CR	CR	CR	CR	CR	CR	CR	CR
	Can't Report	IEP	CR	CR	CR	CR	CR	CR	CR	CR
	Can't Report	LEP	CR	CR	60.00%	10.0	25.48%	CR	CR	CR
	Can't Report	FRL	CR	CR	75.00%	16.0	17.81%	CR	CR	CR
Denio ES - Math	N-Size	Goal	54.60%					10.00%		
	12.0	School	83.33%	17.70%	81.25%	16.0	16.05%	11.11%	52.29%	63.40%
	Can't Report	American Indian / Alaskan Native	CR	CR	CR	CR	CR	CR	CR	CR
	Can't Report	Asian / Pacific Islander	CR	CR	CR	CR	CR	CR	CR	CR
	Can't Report	Hispanic / Latino	CR	CR	72.73%	11.0	22.09%	CR	CR	CR
	Can't Report	Black / African American	CR	CR	CR	CR	CR	CR	CR	CR
	Can't Report	White / Caucasian	CR	CR	0.00%	5.0	0.00%	CR	CR	CR
	Can't Report	IEP	CR	CR	0.00%	3.0	0.00%	CR	CR	CR
	Can't Report	LEP	CR	CR	70.00%	10.0	23.84%	CR	CR	CR
	Can't Report	FRL	CR	CR	81.25%	16.0	16.05%	CR	CR	CR

School Year 2008-2009